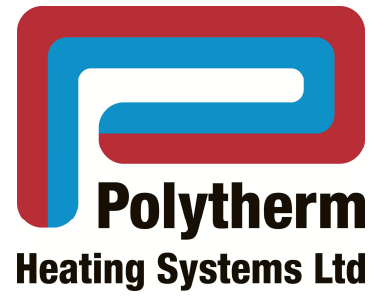


**PRESSTITE®**



**POLYTHERM  
HEATING SYSTEMS LTD.**

**Presentation on Presstite Multilayer Pipe Systems.**

**Presentation To:**

**Presented By:**



## Introduction To



Presstite Multilayer is a composite pipe system using the advantages of **PE-Xc** technology with the positive features of an **aluminium inner pipe**. This giving a large degree of flexibility and toughness while utilising **high temperatures and pressures**.

Presstite is designed for **potable water, sanitary and heating applications**. With both WRAS and DVGW approval, Presstite is ideally suited for installations on both domestic and commercial applications.

The specially designed press fitting which comprises of a brass body and a stainless steel sleeve ranging from (16mm, 20mm, 26mm, 32mm, 40mm, 50mm & 63mm)

Fittings are compressed onto the pipe using a battery powered press-fit tool. This method of jointing takes a fraction of the time that is generally associated with traditional soldering and compression methods.

Press-fit technology has been widely used in Europe for more than twenty years and is becoming increasingly more popular in Ireland over the past decade.

## Applications For



Presstite can be used on potable water, hot and cold water, heating installations and also fan coil units.

It can be installed in domestic applications both in new and existing buildings. Presstite is also ideally suited for apartment blocks and hotels. It can be used in projects where the use of gas is not permitted for brazing such as existing hospital refurbishments or even pharmaceutical applications.

**Domestic**

**Commercial**

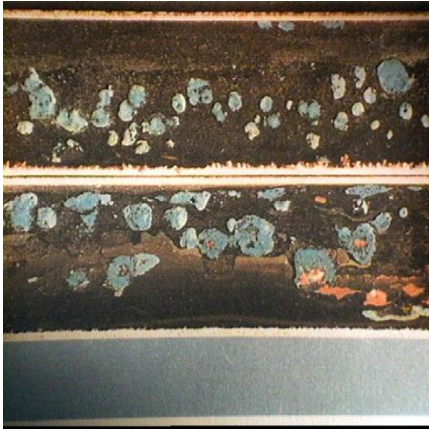
**Industrial**

## Features and Benefits of

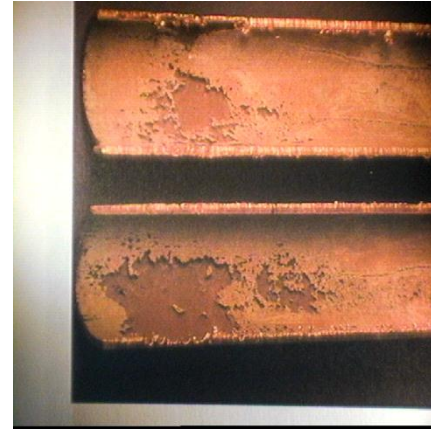


- “ Faster installation, small bend radii possible and easy pipe laying
- “ Press-fittings require no soldering, welding or thread cutting (no hot works)
- “ Reduced jointing with pipe up to 32mm
- “ Quick, simple efficient jointing method resulting in installed cost reductions
- “ Resistant to temperature and pressure requirements in DHW and Heating applications
- “ Hygienic and material neutral
- “ Light in weight when compared to screwed steel products.
- “ Presstite system material costs far cheaper than a traditional copper system
- “ Corrosion-free for long service life
- “ Low recyclable value . reduced on site risk of theft

## Corrosion of metal-pipes



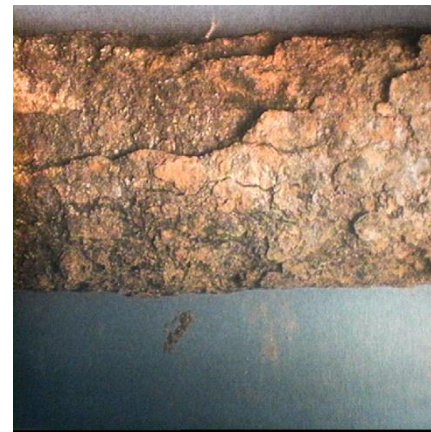
Example 1 Inside Copper Tube



Example 2 Inside Copper Tube



Example 3 Inside Mild Steel Pipe



Example 4 Inside Mild Steel Pipe

## Quality of



The Presstite system is approved by the following regulatory bodies.

ISO 9001 certification all production steps and quality controls are specified precisely according to ISO 9001 so that uniform product quality is ensured.

**UK & Ireland**  
WRAS approved



**Germany**  
DVGW approved



**The Netherlands**  
KIWA (Complying with  
ISO21003)



## Technical characteristics of



The multilayer pipe is manufactured by Hewing Germany, a global market leader in the production of crosslinked polyethylene pipe (PE-Xc pipes).

Each of the four layers (PE-X/adhesive/adhesive/PE-X coating) of the Multilayer pipe is produced by a separate extruder.

This means that the layer thicknesses of the individual layers can be precisely set and controlled, in contrast to other production processes.

The aluminium pipe embedded in the PE-X layers is formed from an aluminium band using a special roll handling process.

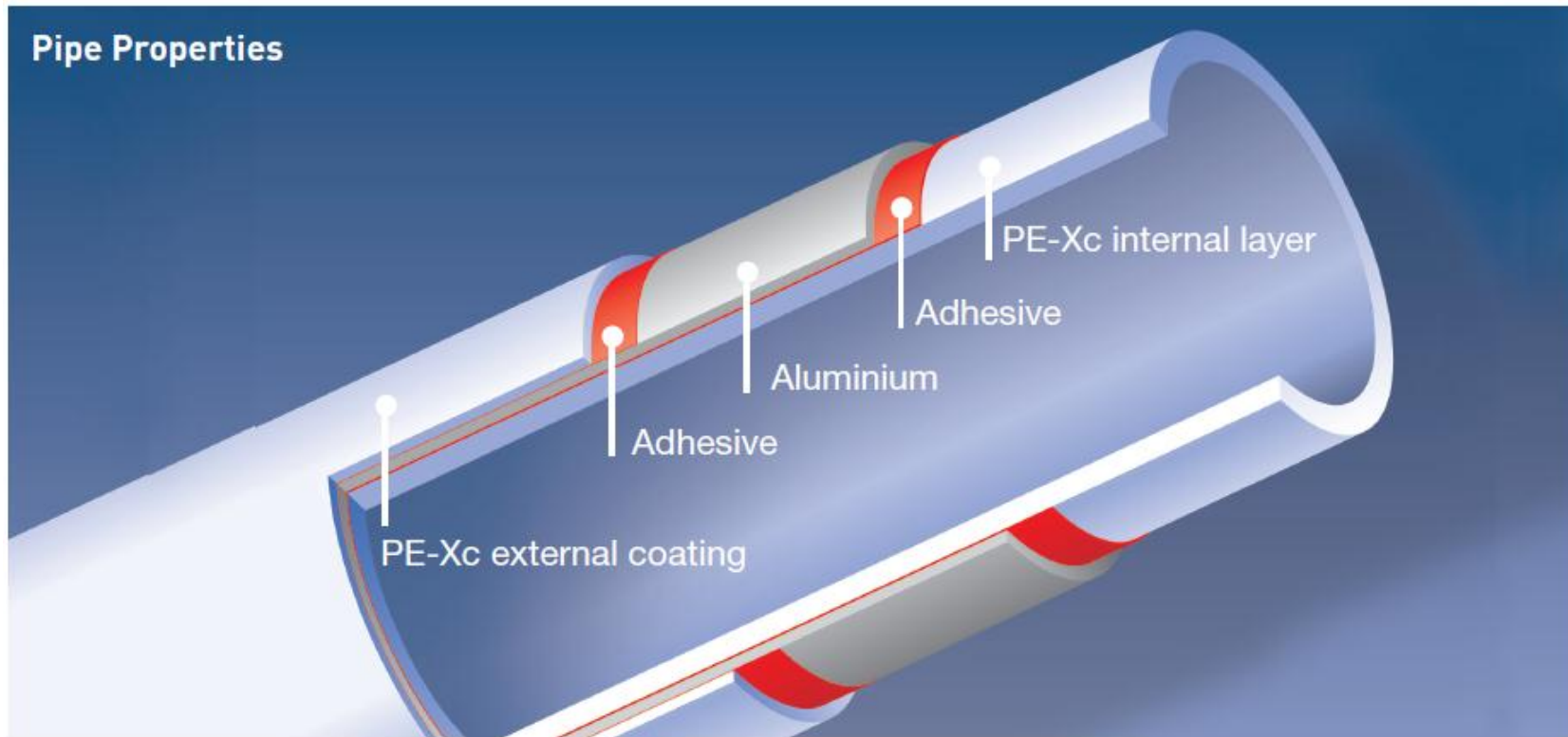
The aluminium layer determines the good form stability and high internal pressure resistance of the multilayer pipe.

The aluminium layer is butt welded without overlap using the WIG welding process.



## Technical characteristics of

# PRESSTITE





# Cross-linking process of



## cross-linking of PE

chemical cross-linking

physical cross-linking

*PEX-a*  
peroxid-  
cross-linking  
cross-linking degree  
min 75 %

- ENGEL-method
- PAM-method
- DAOPLAST-method

*PEX-b*  
Silane-  
cross-linking  
Cross-linking  
degree  
min 65 %

- SIOPLAS-method
- MONOSIL-method

*PEX-d*  
**Azo-**  
cross-linking  
cross-linking  
degree  
min 60 %

- LUBONYL-method

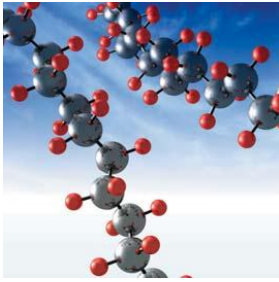
*PEX-c*  
electron beam-  
cross-linking  
cross-linking  
degree  
min 60 %

- HEWING-method

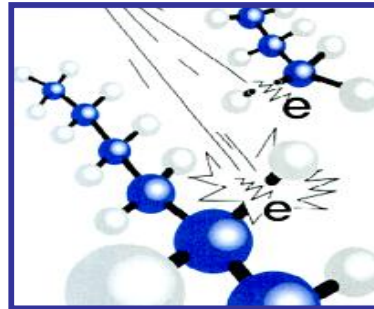
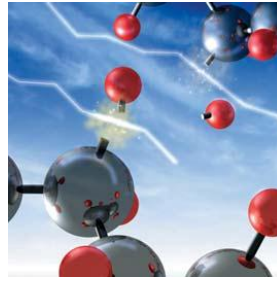


## Physical properties of

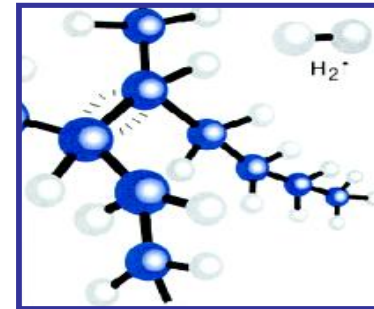
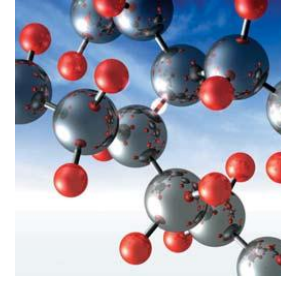
# PRESSTITE



*PE Molecules (Mono)*  
- Blue = Carbon  
- Gray = Hydrogen



*Electron beams bombard  
and isolated hydrogen  
from carbon chains.*



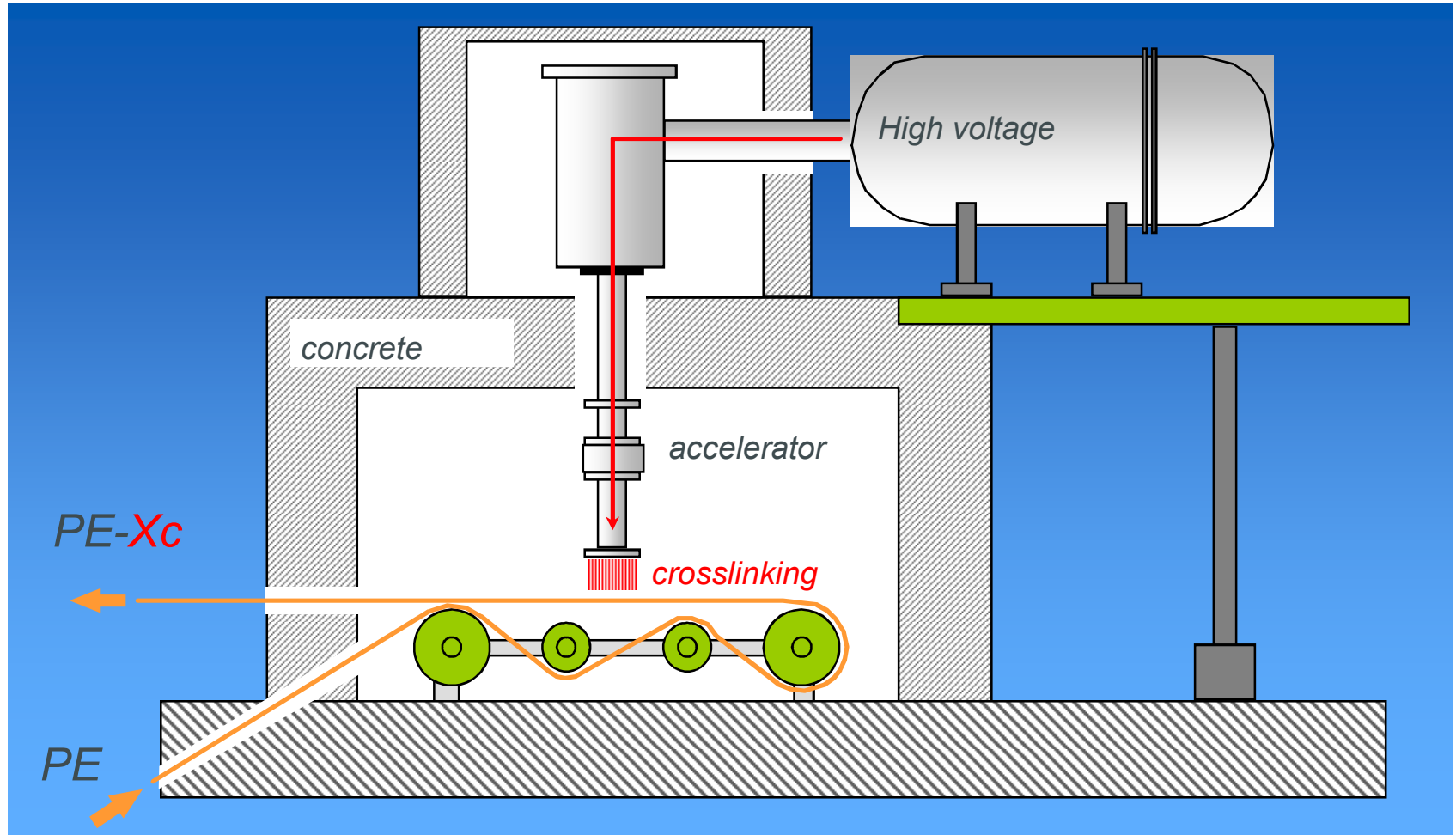
*Molecular chains crosslink  
and join each other forming  
stronger 3D  
structure*

### **Benefits of electron beam cross-linking**

- ~ very high creep resistance
- ~ very high creep strength
- ~ for more than 30 years experienced on the market
- ~ no split-off by-product that might impact the hygiene quality
- ~ very high homogeneity of cross-linking
- ~ very high tension crack stability

# Electron beam cross-linking of

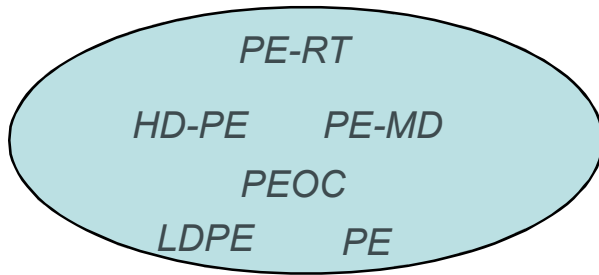
# PRESSTITE



# Polyethylene (PE) v Polyethylene Cross-linked (PEX)

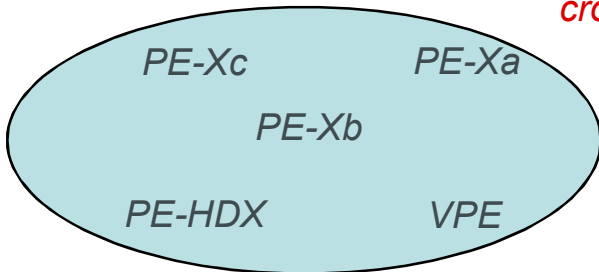


*non-crosslinked*



- PE = polyethylene
- LD, MD, HD = specification of the molecule structure resp. density
- OC = other description of MD [ HPG ]
- PE-RT = RT > **R**aised **T**emperature

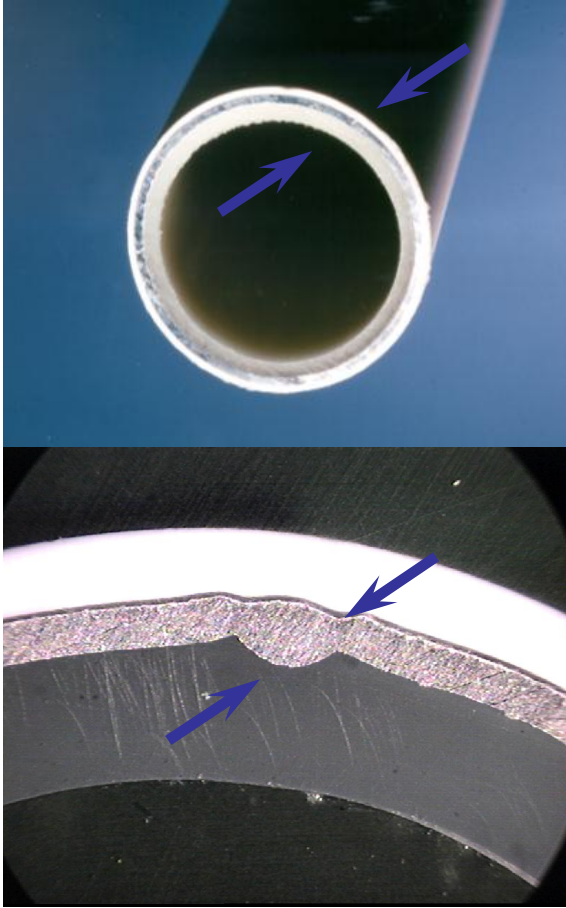
*crosslinked*



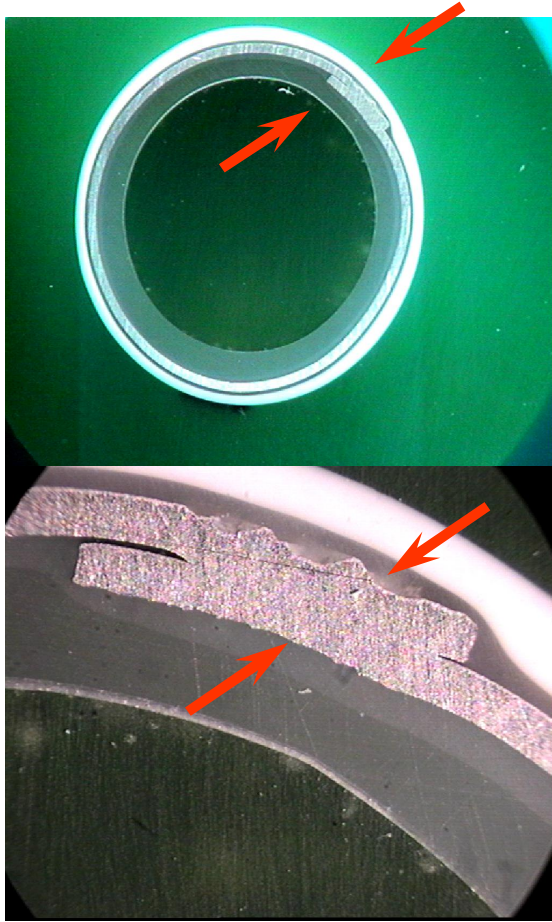
- PE = polyethylene
- X = crosslinked [ International description of crosslinked PE ]
- MD, HD = specification of molecule structure resp. density
- a,b,c,d = crosslinking process
- VPE = old description of crosslinked polyethylene

# Butt welded versus Overlapped

**PRESS TITE**



*butt welded*

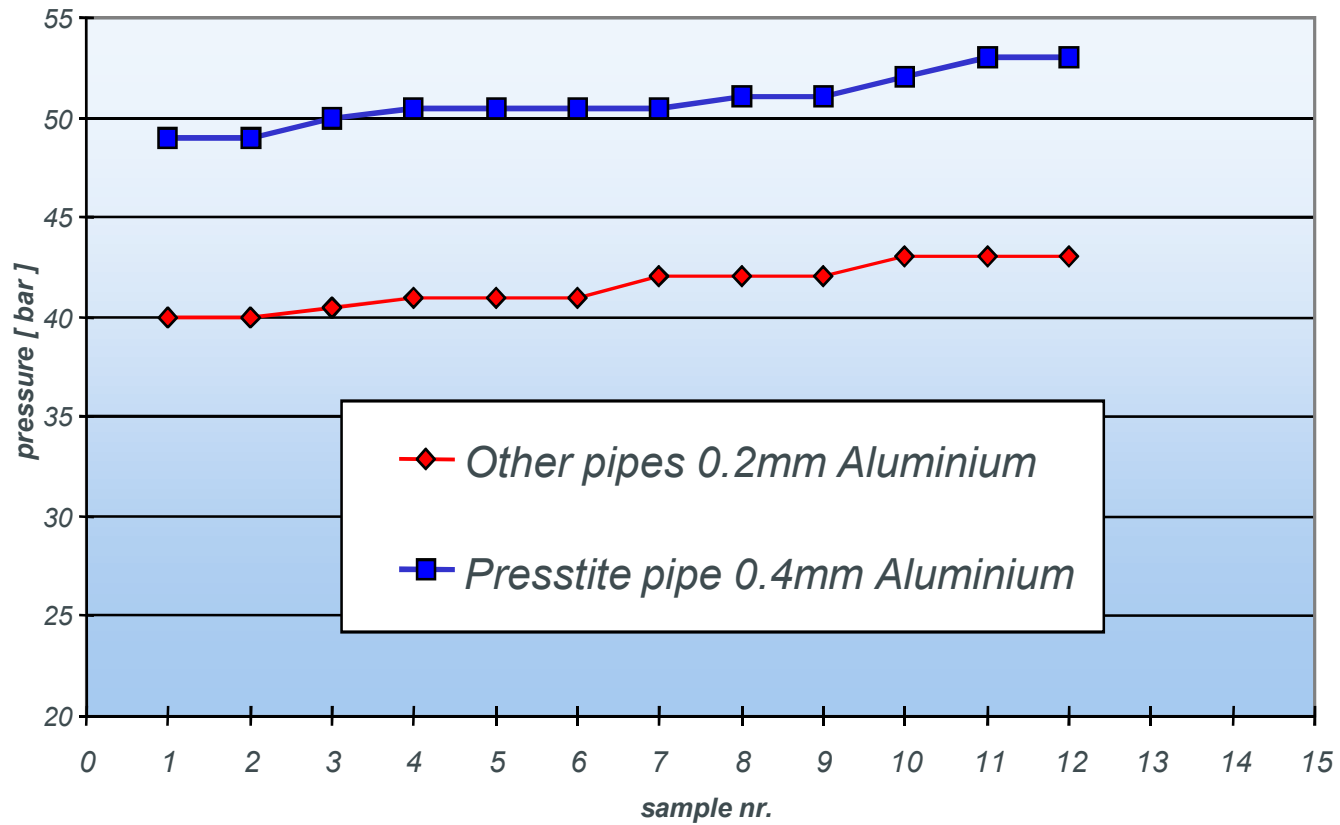


*overlapped welded*

# Aluminium thicknesses of



MT 16 x 2 mm, 90°C







## Technical properties of Copper versus



### Presstite Mullayer Sizes

Outside Diameter mm	Wall Thickness mm	Internal Diameter mm
16	2	12
20	2	16
26	3	20
32	3	26
40	3.5	33
50	4	42
63	4.5	54

### Imperial Copper Sizes

Size inch	Outside Diameter mm	Wall Thickness mm	Internal Diameter mm
1/2"	14.7	0.7	13.3
3/4"	21	0.9	19.2
1"	27.4	0.9	25.6
1 1/4"	34	1.1	31.8
1 1/2"	40.5	1.1	38.3
2"	53.6	1.2	51.2

## Fittings for

# PRESSTITE

The press fittings are manufactured by IPA in Austria. The fittings are constructed as radial press connection elements with multiple joints and therefore guarantee a durable and tight connection with the pipes.

The fitting is made of dezincification brass. The press sleeve is made of stainless steel and is equipped with viewing windows to control the depth for tube plug in. This is connected to the fitting by means of an insulated ring.



## Fittings Features and Benefits for



- “ The IPA-fitting is certified for the application heating and sanitary with all standardised certification bodies.
- “ Press-fittings require no soldering, welding or thread cutting (no hot works)
- “ Quick, simple efficient jointing method resulting in installation cost reductions
- “ Brass . DZR: CW 602N protects against the chemical attack/reaction of oxygen
- “ Permanent tight connection done with 2 sealings of EPDM-X (O-Ring) and a stainless steel sleeve
- “ Light in weight when compared to screwed steel products.
- “ Various range of fittings from 16mm to 63mm

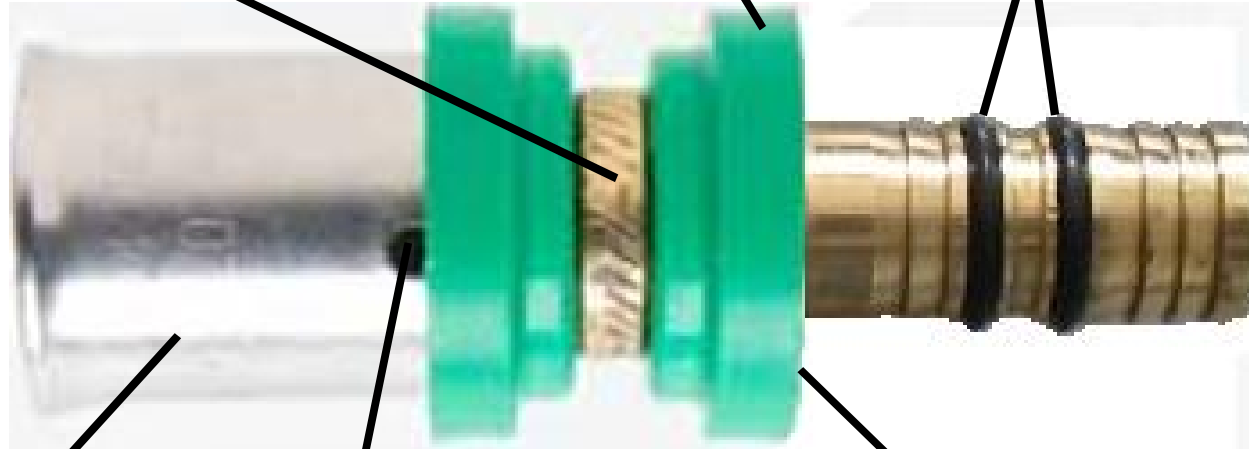
## Physical properties

**PRESSTITE**

Protection against elektrogalvanic corosion

Fittingbody made of brass

2 sealings made of EPDM



Sleeve made of stainless steel

Sight eye

Plastic ring for control of the **TH-tool**

## Connecting the pipe & fittings of



**1.** Cut the pipe square using the specially designed Presstite Cutter.



**2.** Use the correct size Presstite Deburring Tool to chamfer the pipe to create the required bevel for the press fitting to be installed.

## Connecting the pipe & fittings of



**3.** Ensure the fitting is clean and all the components are in correct position. Push pipe into the fitting until it reaches the fitting end. The fitting will show a window and when the pipe is correctly inserted the pressing sleeve is in correct position.



**4.** Close the correctly chosen press-fit jaw tightly around the fitting. Turn on the gun on by pressing the trigger and holding. The pressing process is completed as soon as the pressing jaws are completely closed. When the fitting is complete a change in sound will occur with the press tool. Open the press-fit jaws and remove the pressed fitting

## Key points on installation of

# PRESSTITE

“ Only Presstite trained personnel to carry out installation of Presstite Multilayer.

“ A Presstite joint should only require one attempt.

“ The jaws will not release until the required pressure has been applied.

“ Press fittings must be free from dirt and damage.

“ All Press-tools must be calibrated as per manufactures recommendations.





# Product Range

# PRESSTITE

## MULTILAYER PIPE PEXc/AL/PEXc (BUTT WELDED) 95°C / 10 BAR



TYPE	ALUMINIUM THICKNESS (MM)	PRODUCT CODE
16 x 2mm (100MT COIL)	0.4	920100002
16 x 2mm (5MT LNS)	0.4	920005002
20 x 2mm (100MT COIL)	0.5	920100003
20 x 2mm (5MT LNS)	0.5	920005003
25 x 3mm (50MT COIL)	0.6	920005004
25 x 3mm (5MT LNS)	0.6	920005004
32 x 3mm (50MT COIL)	0.8	920005005
32 x 3mm (5MT LNS)	0.8	920005005
40 x 3.5mm (5MT LNS)	1.0	920005006
50 x 4mm (5MT LNS)	1.2	920005007
63 x 4.5mm (5MT LNS)	1.5	920005008

## MULTILAYER PIPE PEXc/AL/PEXc (OVERLAPPED) 95°C / 10 BAR C/W 10MM INSULATION



TYPE	ALUMINIUM THICKNESS (MM)	PRODUCT CODE
16 x 2mm (50MT COIL)	0.2	930050002
16 x 2mm (100MT COIL)	0.2	930100002
20 x 2mm (50MT COIL)	0.25	930050003
25 x 3mm (50MT COIL)	0.3	930050004
32 x 3mm (25MT COIL)	0.4	930025005

## MULTILAYER PIPE PEXc/AL/PEXc (BUTT WELDED) 95°C 10 BAR C/W CORRUGATED PROTECTIVE SLEEVE



TYPE	ALUMINIUM THICKNESS (MM)	PRODUCT CODE
16 x 2mm (100MT COIL)	0.4	940100001
20 x 2mm (100MT COIL)	0.5	940100002

## MULTILAYER PIPE PE-HD/AL/PE-HD (BUTT WELDED) 70°C / 6 BAR FOR UNDER FLOOR HEATING ONLY



TYPE	ALUMINIUM THICKNESS (MM)	PRODUCT CODE
16 x 2mm (200MT COIL)	0.2	PEALPE 10x200
16 x 2mm (500MT COIL)	0.2	PEALPE 10x500

## CEMAL COUPLING



TYPE	PRODUCT CODE
16 x 2 - 16 x 2	900310032
20 x 2 - 20 x 2	900310033
25 x 3 - 25 x 3	900310034
32 x 3 - 32 x 3	900310035
40 x 3,5 - 40 x 3,5	900310036
50 x 4 - 50 x 4	900310037
63 x 4,5 - 63 x 4,5	900310038

## REDUCER



TYPE	PRODUCT CODE
20 x 2 - 16 x 2	900310022
25 x 3 - 16 x 2	900310023
25 x 3 - 20 x 2	900310024
32 x 3 - 16 x 2	900310025
32 x 3 - 20 x 2	900310026
32 x 3 - 25 x 3	900310024
40 x 3,5 - 25 x 3	900310034
40 x 3,5 - 32 x 3	900310025
50 x 4 - 25 x 3	900310024
50 x 4 - 32 x 3	900310025
50 x 4 - 40 x 3,5	900310026
63 x 4,5 - 25 x 3	900310034
63 x 4,5 - 32 x 3	900310025
63 x 4,5 - 40 x 3,5	900310026
63 x 4,5 - 50 x 4	900310027

## MALE ADAPTER



TYPE	PRODUCT CODE
16 x 2 - 1/2"	900311023
20 x 2 - 1/2"	900311025
20 x 2 - 3/4"	900311024
25 x 3 - 3/4"	900311024
25 x 3 - 1"	900311025
32 x 3 - 1"	900311026
32 x 3 - 1 1/4"	900311026
40 x 3,5 - 1"	900311025
40 x 3,5 - 1 1/4"	900311026
50 x 4 - 1 1/4"	900311026
50 x 4 - 1 1/2"	900311027
63 x 4,5 - 2"	900311028

## FEMALE ADAPTER



TYPE	PRODUCT CODE
16 x 2 - 1/2"	900310203
20 x 2 - 1/2"	900310203
20 x 2 - 3/4"	900310204
25 x 3 - 3/4"	900310204

# Product Range

# PRESSTITE

## FEMALE ASBFTEE CONTINUES



TYPE	PRODUCT CODE
25 x 3 - 1"	900312040
32 x 3 - 1"	900312050
32 x 3 - 1 1/4"	900312060
40 x 3,5 - 1"	900312065
40 x 3,5 - 1 1/4"	900312080
50 x 4 - 1 1/4"	900312035
50 x 4 - 1 1/2"	900312007
63 x 4,5 - 2"	900312008

## 18° ELBOW



TYPE	PRODUCT CODE
15 X 2	900315032
20 X 2	900315033
25 X 3	900315004
32 X 3	900315035
40 X 3,5	900315036
50 X 4	900315007
63 X 4,5	900315038

## 45° ELBOW



TYPE	PRODUCT CODE
25 x 3	900315104
32 x 3	900315105
40 x 3,5	900315106
50 x 4	900315107
63 x 4,5	900315108

## 18° ELBOW MALE THREADS



TYPE	PRODUCT CODE
15 x 2 - 1/2"	900315029
20 x 2 - 1/2"	900315030
20 x 2 - 3/4"	900315034
25 x 3 - 3/4"	900315034
32 x 3 - 1"	900315035
40 x 3,5 - 1 1/4"	900315036
50 x 4 - 1 1/4"	900315037
50 x 4 - 1 1/2"	900315037
63 x 4,5 - 2"	900315038

## 18° ELBOW FEMALE THREADS



TYPE	PRODUCT CODE
15 x 2 - 1/2"	900315029
20 x 2 - 1/2"	900315030
20 x 2 - 3/4"	900315034
25 x 3 - 3/4"	900315034
32 x 3 - 1"	900315035
40 x 3,5 - 1 1/4"	900315036
50 x 4 - 1 1/4"	900315037
50 x 4 - 1 1/2"	900315037
63 x 4,5 - 2"	900315038

## 90° TEE



TYPE	PRODUCT CODE
15 x 2	900318002
20 x 2	900318003
25 x 3	900318004
32 x 3	900318005
40 x 3,5	900318006
50 x 4	900318007
63 x 4,5	900318008

## 90° REDUCER BRANCH TEES



TYPE	PRODUCT CODE
25 x 2 - 30 x 2 - 20 x 3	900318029
25 x 3 - 15 x 2 - 20 x 3	900318424
25 x 3 - 20 x 2 - 20 x 3	900318434
32 x 3 - 16 x 2 - 32 x 3	900318525
32 x 3 - 20 x 2 - 32 x 3	900318535
32 x 3 - 25 x 2 - 32 x 3	900318545
40 x 3,5 - 25 x 3 - 40 x 3,5	900318645
40 x 3,5 - 32 x 3 - 40 x 3,5	900318655
50 x 4 - 25 x 3 - 50 x 4	900318747
50 x 4 - 32 x 3 - 50 x 4	900318757
50 x 4 - 40 x 3,5 - 50 x 4	900318767
63 X 4,5 - 40 X 3,5 - 63 X 4,5	900318858
63 X 4,5 - 50 X 4 - 63 X 4,5	900318878

# Product Range

# PRESSTITE

## INCREASED BRANCH TEES



TYPE	PRODUCT CODE
15 x 2 - 20 x 2 - 15 x 2	800318252
20 x 2 - 25 x 2 - 20 x 2	800318343
25 x 3 - 32 x 3 - 25 x 3	800318454
32 x 3 - 40 x 3,5 - 32 x 3	800318555
40 x 3,5 - 50 x 3,5 - 40 x 3,5	800318676

## REDUCING TEES



TYPE	PRODUCT CODE
20 x 2 - 15 x 2 - 15 x 2	800318252
20 x 2 - 20 x 2 - 15 x 2	800318352
25 x 3 - 15 x 2 - 20 x 2	800318423
25 x 3 - 20 x 2 - 15 x 2	800318432
25 x 3 - 20 x 2 - 20 x 2	800318453
25 x 3 - 25 x 2 - 15 x 2	800318442
25 x 3 - 25 x 2 - 20 x 2	800318443
32 x 3 - 20 x 2 - 25 x 3	800318524
32 x 3 - 25 x 2 - 35 x 3	800318544
32 x 3 - 32 x 3 - 25 x 2	800318523
32 x 3 - 32 x 3 - 25 x 3	800318554
40 x 3,5 - 32 x 3 - 32 x 3	800318625
40 x 3,5 - 25 x 3 - 32 x 3	800318645
40 x 3,5 - 40 x 3,5 - 25 x 3	800318654
40 x 3,5 - 40 x 3,5 - 32 x 3	800318625
50 x 4 - 40 x 3,5 - 40 x 3,5	800318736
50 x 4 - 32 x 3 - 40 x 3,5	800318756
50 x 4 - 50 x 4 - 32 x 3	800318775
50 x 4 - 50 x 4 - 40 x 3,5	800318776

## TEE WITH FEMALE THREAD ON BRANCH



TYPE	PRODUCT CODE
15 x 2 - 1/2" - 15 x 2	80030023
20 x 2 - 1/2" - 20 x 2	80030022
20 x 2 - 3/4" - 20 x 2	80030034
25 x 3 - 1/2" - 25 x 3	80030045
25 x 3 - 3/4" - 25 x 3	80030004
32 x 3 - 1/2" - 32 x 3	80030052
32 x 3 - 3/4" - 32 x 3	80030054
32 x 3 - 1" - 32 x 3	80030006

## TEE WITH FEMALE THREAD ON BRANCH CONTINUED



TYPE	PRODUCT CODE
32 x 3 - 1 1/4" - 32 x 3	80030055
40 x 3,5 - 1" - 40 x 3,5	80030065
40 x 3,5 - 1 1/4" - 40 x 3,5	80030008
50 x 4 - 1 1/2" - 50 x 4	80030007
63 x 4,5 - 2" - 63 x 4,5	80030008

## LEVER ACTION BALL VALVE



TYPE	PRODUCT CODE
15mm	800345032
20mm	800345033
25mm	800345034

## WALL PLATE ELBOW



TYPE	PRODUCT CODE
15 x 2 - 1/2"	800317321
20 x 2 - 1/2"	800317323
20 x 2 - 3/4"	800317324
25 x 3 - 3/4"	800317324

## RADIATOR SPINDLE 28MM



TYPE	PRODUCT CODE
15 x 2 - 15 mm	800325032

## STAINLESS STEEL MANIFOLDS / A BAR



TYPE	PRODUCT CODE
Presstite 2 Way Manifolds	8442
Presstite 3 Way Manifolds	8443
Presstite 4 Way Manifolds	8444
Presstite 5 Way Manifolds	8445
Presstite 6 Way Manifolds	8446
Presstite 7 Way Manifolds	8447
Presstite 8 Way Manifolds	8448
Presstite Ball Valve 1", 1"	50030005
Presstite Ball Valve 1", 3/4"	50030045
Presstite Union 15 x 2mm	850378012
Presstite Union 20 x 2mm	850378013
Presstite Swivel Union 15 x 3/4"	800104124
Presstite Swivel Union 20 x 3/4"	800104134

# Product Range

# PRESSTITE

## BATTERY HYDRAULIC PRESSING TOOL SPN32



SIZE	PRODUCT CODE
14 - 75mm	900400001

## ACCESSORIES FOR SPN32



SIZE	PRODUCT CODE
Additional Battery	900410001
230V Wall Charger	900410002

## PRESSING JAW KSP11 FOR SPN32



SIZE	PRODUCT CODE
10mm	900401002
20mm	900401003
25mm	900401004
32mm	900401005
40mm	900401006

## PRESSING JAW KSP11 FOR SPN32



SIZE	PRODUCT CODE
50mm	900401007
63mm	900401008

## PRESSTITE MP22 MECHANICAL PRESS TOOL



SIZE	PRODUCT CODE
10 - 25mm	900420000

## JAW INSERTS FOR MP22 MECHANICAL PRESS TOOL



SIZE	PRODUCT CODE
10mm	900421002
20mm	900421003
25mm	900421004

## BATTERY HYDRAULIC PRESSING TOOL MAP 1



SIZE	PRODUCT CODE
10 - 32mm	900410000
10 - 32mm Jaws Included	900410100

## ACCESSORIES FOR MAP 1



SIZE	PRODUCT CODE
Additional Battery	900400001
230V Wall Charger	900400002

## PRESSING JAW KSP11 FOR MAP 1



SIZE	PRODUCT CODE
10mm	900411002
20mm	900411003
25mm	900411004
32mm	900411005

## SCREWING TOOL



SIZE	PRODUCT CODE
10mm	900570002
20mm	900570001
25mm	900570004
32mm	900570005
40mm	900570006
50mm	900570007
63mm	900570008

## OUTER SCREWING SPIRIND



SIZE	PRODUCT CODE
10mm	900574002
20mm	900574001
25mm	900574004
32mm	900574005

## INNER SCREWING SPIRIND



SIZE	PRODUCT CODE
10mm	900574002
20mm	900574001
25mm	900574004

# Product Range

# PRESSTITE

## EASY BEND TOOL



SIZE  
15mm  
20mm

PRODUCT CODE  
900400003  
900400003

## PIPE CUTTERS



SIZE  
0 - 57mm  
50 - 140mm

PRODUCT CODE  
900440002  
900440003

## PIPE BREAKERS



SIZE  
0 - 20mm

PRODUCT CODE  
900400002

## PIPE STRAIGHTENERS



SIZE  
0 - 25mm  
Adaptor For Steel

PRODUCT CODE  
900400001  
900400002

## SC-CRIPER



SIZE  
4 Arm Pipe Rest

PRODUCT CODE  
900404001

## DEBRISER PIPE CUTTERS



SIZE  
0 - 20mm

PRODUCT CODE  
900400001

## PIPE BREAKS



SIZE  
0 - 40mm

PRODUCT CODE  
900400001

## PIPE BREAKS



SIZE  
0 - 60mm

PRODUCT CODE  
900400003

## SC - CRIPER



SIZE  
300mm Coil (White/Blue)  
300mm Coil (White/Blue)

PRODUCT CODE  
900404002  
900404003

## PIPE CLIPS



SIZE  
40 x 20mm Pipe Clip  
30 x 20mm Pipe Clip  
30 x 20mm Pipe Clip  
30 x 20mm Pipe Clip  
40 x 3.5mm Pipe Clip  
30 x 4mm Pipe Clip  
30 x 4.5mm Pipe Clip

PRODUCT CODE  
900400003  
900400003  
900400004  
900400005  
900400006  
900400007  
900400008

# Product Range

# SCREWTITE

## CORPLING



SIZE	PRODUCT CODE
15 x 3 - 15 x 3	910210002
20 x 3 - 20 x 3	910210003
25 x 3 - 25 x 3	910210004
32 x 3 - 32 x 3	910210005
32 X 2 - 16 X 2	910210006

## MALE ADAPTOR



SIZE	PRODUCT CODE
15 x 3 - 1/2"	910210007
20 x 3 - 1/2"	910210008
15 x 3 - 3/4"	910210009
20 x 3 - 3/4"	910210010
25 x 3 - 3/4"	910210011
32 x 3 - 1"	910210012
32 x 3 - 1"	910210013

## FEMALE ADAPTOR



SIZE	PRODUCT CODE
15 x 3 - 1/2"	910210014
20 x 3 - 1/2"	910210015
15 x 3 - 3/4"	910210016
20 x 3 - 3/4"	910210017
25 x 3 - 3/4"	910210018
32 x 3 - 1"	910210019
32 x 3 - 1"	910210020

## 15° ELBOW



SIZE	PRODUCT CODE
15 X 3	910210021
20 X 3	910210022
25 X 3	910210023
32 X 3	910210024

## 15° ELBOW MALE THREAD



SIZE	PRODUCT CODE
15 x 3 - 1/2"	910210025
20 x 3 - 1/2"	910210026
20 x 3 - 3/4"	910210027
25 x 3 - 3/4"	910210028
32 x 3 - 1"	910210029
32 x 3 - 1"	910210030

## 15° ELBOW FEMALE THREAD



SIZE	PRODUCT CODE
15 x 3 - 1/2"	910210031
20 x 3 - 1/2"	910210032
20 x 3 - 3/4"	910210033
25 x 3 - 3/4"	910210034
32 x 3 - 1"	910210035
32 x 3 - 1"	910210036

## WALL PLATE ELBOW



SIZE	PRODUCT CODE
15 x 3 - 1/2"	910210037
20 x 3 - 1/2"	910210038

## EQUAL TEES



SIZE	PRODUCT CODE
15 x 3	910210039
20 x 3	910210040
25 x 3	910210041
32 x 3	910210042

## REDUCER BRANCH TEES



SIZE	PRODUCT CODE
15 x 3 X 15 x 3 X 20 x 3	910210043
15 x 3 X 20 x 3 X 20 x 3	910210044
20 x 3 X 15 x 3 X 20 x 3	910210045
20 x 3 X 20 x 3 X 20 x 3	910210046
25 x 3 X 20 x 3 X 20 x 3	910210047

## TEE WITH MALE THREAD OR BRANCH



SIZE	PRODUCT CODE
15 x 3 - 1/2"	910210048
20 x 3 - 1/2"	910210049
20 x 3 - 3/4"	910210050
25 x 3 - 3/4"	910210051
32 x 3 - 1"	910210052
32 x 3 - 1"	910210053

## TEE WITH FEMALE THREAD OR BRANCH



SIZE	PRODUCT CODE
15 x 3 - 1/2"	910210054
20 x 3 - 1/2"	910210055
20 x 3 - 3/4"	910210056
25 x 3 - 3/4"	910210057
32 x 3 - 1"	910210058
32 x 3 - 1"	910210059

## MANIFOLDS



SIZE	PRODUCT CODE
2-Way Manifold c/w Adaptors	910210060
3-Way Manifold c/w Adaptors	910210061
4-Way Manifold c/w Adaptors	910210062
3/4" Nickel Blank Cap	910210063

## SPARE RING



SIZE	PRODUCT CODE
10 mm	910210064
20 mm	910210065
25 mm	910210066
32 mm	910210067

## OFFICE ADAPTORS



SIZE	PRODUCT CODE
15 mm - 1/2" Inch Copper Adaptor	910210068
15 mm - 15mm English Copper Adaptor	910210069